



Parent News

Volume 30, no.1 | March 2010

PARENTS ENCOURAGED TO HAVE THEIR SAY ON THE NEW AUSTRALIAN CURRICULUM

The NSW Parents' Council has been invited by the NSW Board of Studies to participate in the consultative process around the introduction of the new Australian Curriculum. The Council will have Executives sitting on the consultative meetings for Whole School Curriculum matters, K-10 draft curriculum in English, mathematics, science and history and the implications for assessment, reporting, examining and credentialing. These meetings are scheduled to take place in mid March

In a recent press release from the Board of Studies NSW, the Board's President, Tom Alegounarias, said parents had an important voice in all NSW consultations and urged parents to make use of the opportunity to speak up about the draft Australian curriculum.

"The NSW Board of Studies is responsible for advising the NSW Government on the draft Australian curriculum, and we'll be coordinating the overall NSW response to the Australian Curriculum, Assessment and Reporting Authority (ACARA)," Mr Alegounarias told the Parents Council. "I encourage those with an interest in the new curriculum developments to take advantage of our convenient online survey form, or even attend one of the meetings scheduled in March."

"NSW has joined with the Australian Government and all other states and territories in a joint endeavour to develop an Australian curriculum, initially for English, mathematics, science and history."

"Responsibility for developing the Australian curriculum is held by ACARA, while the NSW Board of Studies remains responsible for advising the NSW Minister for Education and Training on the suitability of curriculum for NSW schools, including the Australian curriculum."

Mr Alegounarias urged parents to also read the joint letter to NSW school principals on the Board's website, as it would explain the way consultation would work and result in a coordinated statewide response to ACARA.

The Australian curriculum in the areas of English, mathematics, science and history will be available for implementation from 2011. ACARA has said its draft documents will be available in the week starting 1 March 2010.

The NSW Board of Studies has posted new information for parents on their website, explaining the next phases of the consultative process and shows parents how they can have their say.



The NSW Parents Council is a highly valued source of advice for the NSW Board of Studies and one of the Board's most important stakeholder groups.

***Mr Tom Alegounarias
President—NSW Board of Studies***

Parents are invited to attend and give their views— please go to : boardofstudies.nsw.edu.au/australian-curriculum

The NSW Parents Council Invites you to attend their Annual Awards of Excellence night and AGM on Friday 11th June at St Josephs College Hunters Hill

Invitations and further information will be posted to your Parent Association or you can contact us on 9955 8276 or

office@parentscouncil.nsw.edu.au

Inside This Issue

My School Website	2
Presidents' perspective	3
Principals' Perspective— Ms. Kate Clancy, Santa Sabina College	3
Northcross Christian School	4
Welcome to new staff member	4
Dalwood Assessment Centre & Palm Avenue School	5
Kingsdene Special School	6
Obituary—Brian Keating	7
Obituary—Donald Macaulay	8
NSW Parents Council Annual Awards of Excellence	8

**RECEIVE THIS
NEWSLETTER VIA PDF
AND LINK US TO YOUR
SCHOOL NEWSLETTER
OR WEBSITE**

**contact us to BE ADDED
TO OUR EMAIL LIST.**

**DOES YOUR PARENTS
ASSOCIATION HAVE ITS
OWN EMAIL ADDRESS?**

MY SCHOOL WEBSITE

MAKE SURE YOU 'READ BETWEEN THE NUMBERS'!

The NSW Parents Council supports transparency and information that enables parents to provide better educational outcomes for their child.

information currently provided at the My School website has focused community attention however parents must be extremely wary in drawing any conclusions and be alert to the unintended consequences.

A real concern about the My School website is that it is reporting results from literacy and numeracy testing (NAPLAN) that was designed as a diagnostic tool for teachers to assess and measure individual student achievement. These test results are now being viewed by many as an indicator of a school's performance which is not what NAPLAN was designed for. If a suitable measure of a school's performance was devised and constructed it may be quite useful.

At this point, the website contains only 2 years of NAPLAN data and these are not the same students that have been tested. As the data is added to over coming years it will be possible to gain a more in-depth perspective of how a school's cohort is performing, however as above, this still requires some caution as NAPLAN was designed with a different purpose in mind.

The 'like schools' groupings on the My School website should be viewed with caution. While ICSEA (the Index of Community and Socio-Educational Advantage) can be a guide to how similar school populations around the country compare against a range of measures, there may well be anomalies in the groupings. In addition, it may not make sense for a parent to compare schools that are hundreds (or even thousands) of kilometres apart.

Remember, Professor Barry McGaw from ACARA stated "We're not comparing schools; we're not saying these schools are like one another in size, locality or physical resources. We're saying the families from which these students come are equivalent, we're comparing schools that have students from similar backgrounds; we're not comparing schools with similar facilities."

Unfortunately that is exactly what is happening. Media outlets could not resist the temptation and immediately used the data to produce simplistic league tables that have absolutely no statistical or other merit and validity. Clearly, it is not possible to measure the true worth or value of a school's performance from a single number or even a range of test results. Parents and the community can best determine the performance of a school and whether it meets their child's needs by actively engaging in a partnership with the school.

We as parents need to be aware of the 'unintended consequences'. The most immediate way for a school

to improve its results is to abandon its policy of care for those who need help most. Secondly, a school may abandon its general education approach and start teaching to the test, which means that students spend a portion of most days learning how to pass the NAPLAN tests rather than getting an education. The more practised a student becomes, the better he or she performs at NAPLAN.

Perhaps the worst 'unintended consequences' are that schools will start selecting for the brightest children to match the rankings of the selective schools.

The edict by Victorian Premier Brumby that training for NAPLAN must become a priority in the Victorian Education system is a major concern. We do not want this approach in NSW as political leaders mandating the role of teaching to the test demeans quality teaching, can only result in a narrowing of the curriculum, and the abandonment of an overall quality education required to produce critical thinkers.

The information provided on this site is not as useful to parents as the providers may think and is only worthy of a cursory glance. It is not a tool to determine an appropriate school for your child as many aspects and values are not even considered.

Current parents cannot wait a year for information to evaluate. It is imperative parents engage with the school and teachers early to identify any educational issue and implement appropriate strategies for the successful education of their child. As we know, today education is recognised as a partnership with the school, teachers, parents and the child.

RESEARCH ON JUVENILE BIPOLAR DISORDER

Healthy control subjects are required for a brain imaging research project that is being conducted by doctors and scientists at Royal North Shore Hospital. The study is investigating bipolar disorder in adolescents and participation involves having an MRI brain scan whilst you are simultaneously completing several experimental tasks. The study goes for approximately 1 hour and does **NOT** involve any drugs or needles

If you are between the ages of 12 and 18, and do not have any significant medical history and are interested in more information about this study you can email the study coordinator on:

irea2962@uni.sydney.edu.au or call Jessica on **0437633540** for more information

NSW PARENTS' COUNCIL PRESIDENT'S PERSPECTIVE - BY MALCOLM POUND



It is going to be a very busy year in 2010 for the NSW Parents' Council with introduction of the new Australian Curriculum and the associated consultative process, the renegotiation of the Federal Funding agreement due to start and the continuing advocacy on behalf of our parents' voice. We have actively been lobbying the State Government and the Opposition to support the reinstatement of the bus service to the Illawarra Gammar

School, Dalwood Assessment Centre and Palm Avenue remain a critical issue for the Council and with the Joint Forum, we are actively working on Parent Engagement.

The launch of the *My School* website has caused concern particularly in regard to the interpretation of the information. While the Sydney Morning Herald considers it easy to rank schools in simplistic league tables any rudimentary analysis exposes major flaws when making any comparison or meaningful conclusion from the data provided.

My advice to parents is to ignore any league table and certainly not purchase any book or information based on the data from this site. In selecting a school or evaluating the performance of a school the traditional approaches still apply. (see NSWPC website) www.parentscouncil.nsw.edu.au

Parents will need to be vigilant regarding the unintended consequences as discussed in this issue to ensure the education approaches are not constricted by any means. We, after all, want meaningful educational outcomes for our children.

Interestingly the most recent research conducted by the NSWPC, shows that parents who are the least well educated are most supportive of the system but change their mind when they learn of the likely unintended consequences. These same parents who supported constant testing did not want to see schools advantaged or disadvantaged on the basis of the scores achieved. In other words, once they realise the unintended consequences of these simplistic tables they change their minds as to their value.

How do you measure a school's performance? I do not have the answer. However when I recently attended a P&F meeting we asked how many parents had been on the MySchool website. From about 30 people only 2 persons had visited the website. Is this a measure of how well parents perceive that school is performing?

Taxpayers cringe when they see Governments waste \$330 million. Parents of students with disabilities must wonder with despair why it is so difficult to obtain a reasonable level of funding for their children's basic education. Kingsdene is a school for children with profound disability and will close as the charity Anglicare cannot provide the necessary funding to maintain the facility.

The facility is unique, being the only school of its type in Australia and warrants active investigation by both governments as to the effectiveness and appropriateness as a model to adopt elsewhere. A cursory approach is not sufficient and a lack of understanding by government is evident when the level and type of disability is shown not to be understood.

I would like to thank Karen Hickmott and Mary-Lou Carter for their extraordinary efforts in being able to find sufficient time to provide an extensive submission to the Parliamentary Inquiry into the provision of education to students with a disability or special needs. Well done.

PRINCIPALS PERSPECTIVE

- MRS KATE CLANCY, PRINCIPAL, SANTA SABINA COLLEGE, STRATHFIELD

In December last year I attended the end of year concert at Mary Bailey House, our Early Childhood Centre. One of the traditional items is to ask the group moving onto 'big school' what they want to be when they grow up, a favourite part of the night. It won't surprise you to know there were a few firemen, truck drivers, builders, doctors and nurses. What is also not surprising is that the aspirations reflect the culture, with make-up artists, pop stars, paleontologists, racing car drivers and web designers some popular choices. Beyoncé has a lot to answer for! However I'm delighted to say teachers are still on the list!

The world of today faces many challenges. We are being called on to use our creative problem solving abilities in an unprecedented way. If the purpose of education is, among other things, to prepare our children for life, then schools will play a central role in the way challenges are confronted

and solutions developed.

Acclaimed educator, Sir Ken Robinson, argues that '*creativity is as important in education now as literacy, and we should treat it with the same status*'. The personality of the creative individual, robust, risk taking, resilient, needs to be cultivated from an early age. We know such individuals need a safe and supportive environment in which risk taking is encouraged.



Continued page 5

THE CAMPAIGN TO SAVE THE DALWOOD ASSESSMENT CENTRE & PALM AVENUE SCHOOL

PEOPLE POWER HAD WORKED; PARENTS WERE FINALLY LISTENED TO,
BUT ONLY AFTER A GREAT AMOUNT OF EFFORT AND PUBLICITY.



David Cameron
President ICPA-N

Dalwood Assessment Centre and Palm Avenue School provide intensive one-on-one assessment and assistance for students from rural and remote NSW with severe learning difficulties. The NSW Government decided that a review into the services offered by the joint facility would be undertaken, with a view to assisting more students. This process began in August 2008 and despite assurances that ICPA-NSW (the Isolated Children's Parents' Association) would be involved, no meetings were held until October 2009, when it was announced that the facility would be relocated and restructured with the Dalwood and Palm Avenue sites due for closure at Christmas 2009.

The intense public campaign by Dalwood parents, politicians and parent organisations, including the ICPA and the NSW Parents' Council, culminated with a fortuitous change of Premier, saw common sense prevail. The Minister for Education, The Hon Verity Firth, announced on 17th December that Dalwood Assessment Centre and Palm Avenue School would remain in their current configuration for terms one and two of 2010, while an Advisory Panel would guide the development of a sustainable programme for students with learning difficulties. Premier Keneally said that "parents should have certainty until an improved service is up and running". Parent and people power had worked; parents were finally listened to, but only after a great amount of effort and publicity.

Despite a huge relief that commonsense has prevailed, the harsh reality is that 2010 is now here and ICPA-NSW has some concerns about the operation of this facility in the next 2 terms and indeed in the future. With out a permanent home for these facilities yet to be resolved, we can only hope that the Advisory Panel set up by the Government works in an unbiased and objective manner to keep the successful components of the original model, provide a service that reaches more students and can place the facilities in appropriate and conducive surroundings.

Editorial note: The NSW Parents' Council continues to support the fight to save Dalwood Assessment Centre and Palm Avenue School. According to a Department of Education and Training spokesperson, as of the 23 February 2010, the current situation is as follows:

Last year, the NSW Government made a commitment that the four-week residential program offered by the Palm Avenue School will continue until the end of Term 2, 2010, while NSW Health and the Department of Education undertake a comprehensive planning process to improve services. That commitment has not changed.

The NSW Government has recently announced that Royal Far West in Manly will be providing accommodation for the intensive residential program until June 2010. Importantly, this is only a change to where children will reside while on the program. The program will remain the same and will continue to be taught by teachers from the Palm Avenue School. Assessments of students are continuing at the Dalwood Assessment Centre and the outreach programs coordinated by Palm Avenue School are also continuing for students across New South Wales.

If parents have any queries about this service please contact Mr Neale Waddy, Manager, Disability Programs Directorate on telephone number
(02) 9244 5860.



PARENTS POWER ON THE MOVE CANBERRA 18 MARCH 2010

Do you know how the education budget for students with disabilities is derived? Well like all funding it's a convoluted and mysterious system.

You've probably heard about drastic cuts to the budgets of small independent special schools that cater for some of our most vulnerable children providing them with a quality education that respects their abilities and their dignity. We are concerned that there has been no focus on students with disabilities in the Education Revolution and so St Lucy's, a small special school for children with disabilities in Wahroonga, is organising a trip to **Canberra on the 18th March**. They are hoping to get their message across so that children with disabilities are not forgotten in the 2012 re assessment of funding and delivery of education services.

The trip will encompass a short march with balloons and banners between old and new parliament house, a brief concert and a function with entertainers and some celebrity input and a trip to Questacon afterwards. St Lucy's are looking for any assistance in terms of people to attend or any contacts with people that may be able to assist. If you can help in any way or would like to participate it should be a great day and a real lesson in democracy for all!

Please contact Karen Hickmott at
karen@hickmott.info or 9144 7003

EDUCATION FUNDING NEEDED – NOT CHARITY! KINGSDENE SPECIAL SCHOOL UPDATE

The Kingsdene Special School was featured on the Four Corners program on 22 February, 2010. This program highlighted the need for such a school, its positive benefits to the students, their parents and siblings. The program was a very powerful reminder that an accident of birth or of life can happen to anyone but will not happen to everyone. It showed that children, even with the most severe of disabilities deserve the opportunity for personal, social and spiritual growth in the company of their peers with the help and support of their families and the wonderful teachers and carers dedicated to their progress and well being

The Kingsdene Parent Group has written to the Federal and state government ministers and to the Prime Minister but none has yet responded. The Kingsdene parent group has also written to numerous 'disability advocacy organisations' all of which have either not responded or have refused to assist the students and their parents to advocate the systemic issue of equitable funding of students with disabilities in non-government schools on par with their peers with similar severe disabilities in government schools.

The lack of government response so far indicates to the Kingsdene Parent Group that Federal and State governments, by their policies, accelerate family breakdown. A number of Kingsdene families have told the Department of Education and the Department of Ageing Disability and Home Care that without the school, their families will not survive.

The Department of Disability has been left in no doubt that family breakdown is inevitable and the Department is preparing counselling services for that inevitability. Such family breakdown will adversely affect every member of the family, the student with severe cognitive and intellectual disability, their parents and their siblings.

We long to see the tangible co-operative federalism of which the Prime Minister Kevin Rudd spoke when he took office. Co-operative federalism would see the Federal Education Minister and Minister for Social Inclusion, Julia Gillard, together with the Premier of NSW, Kristina Keneally, the NSW Minister for Education, Ms Verity Firth, the NSW Minister for Disability, Paul Lynch and the NSW Minister for Community Services Linda Burney, show the necessary leadership on this matter and commit to finding a solution. But hitherto the federal government has made an offer of inadequate emergency funding in 2011 and 2012 when the school will close in 2010. This is not a serious long-term solution and leaves these very vulnerable students and families at breaking point.

It will be the taxpayers of NSW who will pay dearly from the fallout of broken families if this school closes. In the scheme of things what is required is a very small amount of additional recurrent funding, which, with leadership and political will could undoubtedly be found between federal and state treasuries. Such recurrent funding would enable Anglicare to continue its excellent and unique school program in the long-term.

The Kingsdene model program is for students with severe to profound intellectual and multiple disabilities with attendant mal-adaptive, autistic and challenging behaviours. It ensures their training in academic, life and social skills which will maximise their potential and ensure their social inclusion in our community. Kingsdene has been supported by Anglicare for many years now- but isn't it about time the government paid for these children's education and not a charity?

The Kingsdene Parent Group would be grateful for the advocacy of any other parents on this matter. Please write to your local member and to Julia Gillard asking that a long-term equitable solution be found for this one-of-a-kind school to remain part of the rich diversity of education models that can cater to all students no matter what their disability or disadvantage.

Mary Lou Carter



Continuation of Kate Clancy's address Page 3

Professor Susan Greenfield draws on the latest findings in neuroscience when she tells us that creativity is a characteristically human activity, it is deeply fulfilling for those who achieve it, the ultimate expression of individuality.

Howard Gardener includes in his Five Minds for the Future *'The Creating Mind'*. It breaks new ground; poses unfamiliar questions, conjures up fresh ways of thinking, and arrives at unexpected answers. It involves going beyond existing knowledge to fashion works that stretch existing genres or configure new ones.

What does this mean for schooling? It means ensuring a safe and supportive environment in which risk taking is encouraged. It means we need to promote exploration, challenging problems and tolerance, if not actively encouraging productive mistakes!

Young children are intrigued by the world around them. Howard Gardener reminds us that *'the mind of the five-year-old represents, in one sense, the height of creative powers'*. We need to see a shift from big C creativity, to second generation creativity that focuses on the thinking and doing of a greater proportion of the population. Certainly at Santa Sabina, we believe it is part of our Dominican tradition to create a learning environment in which original thought is the highest priority, and facts are used to give weight to ideas rather than sought as ends in and of themselves. I believe this is the way of the future! *Kate Clancy, Santa Sabina College, 2010.*

References :

Gardner, Howard

Five Minds for the Future

2007: Harvard Business School Press

Greenfield, Susan

The Quest for Identity in the 21st Century

2008: Sceptre; Hodder and Stoughton

PARENTAL INVOLVEMENT AT NORTHCROSS CHRISTIAN SCHOOL ENRICHES THE EDUCATIONAL & SOCIAL NEEDS OF THEIR FAMILIES

Northcross Christian School K-6 at Ryde is well-supported by an enthusiastic parent community. Parental



events.

involvement is such a vital and valued contribution in the life of our school. Parents are strongly encouraged to participate in a range of activities including: class reading groups, Stage 2 literacy program, middle school program and regular assistance in the library and at sports



Whether at the end of year carols in the park or the musical production, parents are engaged in each facet of the Northcross community. Fundraising is directed by a dedicated and committed Parents and Friends Association.

Parental involvement at Northcross Christian School enriches the educational and social needs of our families.

In our recent production of Alice in Wonderland, our parents assisted with all aspects from costume design and preparation to choreography. "Our costumes, made by the mums were colourful and so much fun to wear." comment by a Northcross Year 2 Student.

Maria Abram (NSW Parent Council representative for Northcross Christian School)

Linda Herrmann (Secretary, Parents & Friends Association)

The NSW Parents Council Introduces Rowena Stulajter

Community Development Manager



Please join The NSW Parents Council in extending a warm welcome to our new member of staff Rowena Stulajter, in the role of Community Development Manager. Rowena has worked in the Community services sector for the past 6 years with varied experience from Case Manager with Probation and Parole service to coordinating a Street Outreach Service on the Northern Beaches of Sydney and more recently with Mission Australia working in the Personal Support Program and Employment services.

This experience, along with the fact that she has 3 teenage children, all of whom attend non-government schools, gives her both the personal and professional experience to become an essential resource for Parent Groups throughout NSW non-government schools. Rowena's initial goal is to raise the profile of the NSWPC and to develop and

improve communications with our Parent Groups.

Rowena can be contacted on **02 9955 8276** or **0458 558 726** or email **community@parentscouncil.nsw.edu.au** for further information or to arrange a suitable time for Rowena to meet you or attend your parent meetings.

HELPFUL GUIDE FOR 2010 KINDERGARTEN PARENTS—from the Board of Studies

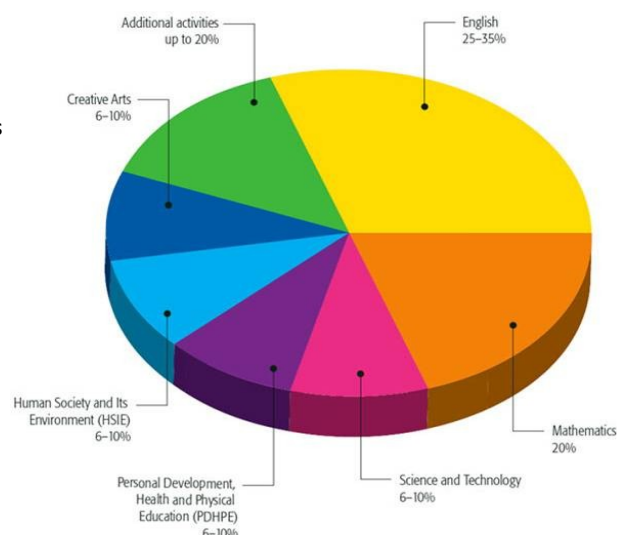
The [Parents' Guide to the NSW Primary Syllabuses](#) is an easy-to-read 16 page booklet that has been developed to help parents follow their child's learning from Kindergarten to Year 6.

Developed in consultation with parents and teachers the guide has been very well received and has proved to be one of the Board of Studies' most requested publications since its introduction in 2008.

The booklet gives a straightforward explanation of the NSW K-6 syllabuses.

At a glance parents can see:

- the amount of time their children are spending on each of the key learning areas
- examples of the kinds of things children can learn in each key learning area in each year of primary school
- examples of classroom activities
- explanations of important educational terms



LIFE MEMBER OF THE NSW PARENTS COUNCIL REMEMBERED
BRIAN KEATING DFC AM BDS
PASSED AWAY IN AUGUST 2009

At the time of the formation of NSW Parents' Council (and later, the Australian Parents' Council) in 1962 there was no government support for non-government schools students, apart from federal government taxation concessions for education expenses and donations to schools.

All Catholic schools were then run by religious organisations; the post-war baby boom and increasing immigration filled the schools to overflowing; classes were very large – up to 70 children and sometimes more; facilities were basic; religious vocations were decreasing; and financial pressures increasing.

The effort to keep Catholic schools alive since the Parkes Government had removed all aid to non-state schools some 80 years previously looked like failing. The early 'state aid' proponents played an important role in subsequent decisions for a more equitable distribution of government funds available for schooling.

The first Federal payments for recurrent expenditure to students in all Australian schools came with the McMahon Government's announcement that in 1970 per capita payments of \$50 per secondary student and \$35 per primary school student would be made to the authorities of the school attended. So began the history of federal per capita funding. One of the earliest of the founding parents, intimately involved in the early development of the NSW Parents' Council and the Australian Parents' Council, was Brian Keating, DFC AM BDS. For many years he devoted time and energy to an ideal of educational justice and the right of parents to choose a school for their children. He died in August 2009.

Brian served with distinction as aircrew in the RAAF during World War II and survived 30 bombing raids over Germany. He was awarded the Distinguished Flying Cross for gallantry and returned home to Australia to take up dentistry and to raise his family of four children in Goulburn, NSW. He was a positive and inspirational man, open and respectful to the ideas of others, and great company. He enjoyed the unfailing support of his wife, Win, in all his endeavours.

In 1962, with three children in Catholic primary schools, he played an active role in the formation of the APC, believing from the start that such an organisation needed to be non-denominational, non-party-political, and representing the parent voice for choice of school. He retained his activities and interest in the NSW and national body throughout the rest of his life.

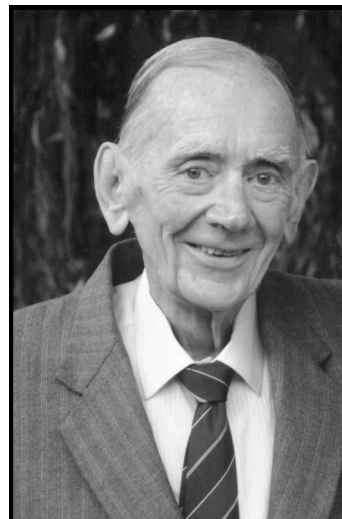
He served as Chairman of the New South Parents' Council for some 13 years and regularly attended APC Annual Conferences and Executive meetings as the NSW Parents' Council representative, playing a role in policy development and strategies for advocacy to politicians of all political persuasions. He was President of the APC from 1970 to 1972. He was for some years a member of the Federal Catholic Schools' Committee formed in 1967 by the Bishops' Conference. He served on the Canberra/Goulburn Diocesan Schools Board and chaired the Council of the Marian College Goulburn for many years.

Brian was also active in civic affairs, serving as alderman on the Goulburn City Council from 1959 to 1968.

In 1982, Brian received an award for outstanding merit for his work for Catholic schools from St Patrick's College Goulburn. The President of St Patrick's College paid tribute to Brian in words which still ring true:

"We do honour tonight to a man who had his sights set towards an ideal of educational justice and who has pursued it with a faith and dedication that has been an inspiration to people everywhere. There is no more worthy recipient of this honour than Brian Keating, the fighter and advocate of educational freedom and a firm believer in the rights of parents to demand for their children the education of their choice".

A fitting epitaph for a brave and principled man of faith.



The NSW Parents' Council and its affiliated organisations in the various states of Australia and nationally, owe much to the dedicated and courageous parents who came together in the early 1960s to form a national organisation in pursuit of educational justice for non-government school students and their parents.

LIFE MEMBER OF THE NSW PARENTS COUNCIL REMEMBERED
DONALD MACAULAY
PASSED AWAY IN DECEMBER 2009

The New South Wales Parents' Council mourns the recent death of **Donald Macaulay**, faithful and valued member of the Executive of the Council for eighteen years between 1981 and 1999.

His service included seven years as the Treasurer and from 1992 to 1994 he served as President of the NSW Parents' Council, resigning that post in February 1995 owing to work commitments in Western Australia. He remained on the Executive attending meetings when he could and lending his cheerful and considered support to all the operations of the Council.

Donald was an interested and engaged participant in the Australian Parents' Council and could always be relied upon for sound and considered judgment in all his dealings with the members of the councils, both state and national.

Charles Macaulay described his father in the following manner at Donald's funeral

'I have been thinking over, in the last couple of days, what aspect of Dad really defined the man. I think, when you clear away all of the results of his endeavours, you mine down to one thing from which his professional, community and family successes are founded. And that is that he knew his own mind. He had firm principles. He had what we might call today an in-built moral compass. He acted on his principles, and those principles informed all of what he did. Decision making for him was therefore simple. He did what was right. He was patient, and he was gentle. He very rarely swore and seldom lost his temper. He had a firm belief in the free market, and in engineering and science and humanity to fix the world's crises.'



Donald Macaulay loving, dedicated and loyal, husband father, professional and volunteer. The Council members express their thanks for his dedication, commitment and tireless lobbying. We honour his passing.

The NSW Parents' Council is grateful for the time and effort expended so readily and graciously by the many parent volunteers who work, or have worked in the past, to pursue the aims and objectives of the New South Wales Parents' Council on behalf of non-government school parents and their children.

NSW Parents' Council would like to invite you to their annual

Awards of Excellence Night & AGM

on Friday 11th June at St Josephs College Hunters Hill

This is an opportunity for each Parent Association to nominate a parent or parent body within their school who has made a difference within its school and its community.

The Minister Verity Firth is sending a representative to present the prizes.

We have also invited Maggie Hamilton, author of "What's happening to our girls" and Carol Taylor, Chief Executive of the Board of Studies, to discuss the implications of a national curriculum on our children's education.

NSW Parents' Council

Contributions to this Newsletter from Parents and Principals are welcome

PO Box 1152, North Sydney NSW 2059

Suite 301 25-27 Myrtle Street

Crows Nest NSW 2065

Phone: (02) 9955 8276 Fax: (02) 9954 4429

Office email: office@parentscouncil.nsw.edu.au Website: www.parentscouncil.nsw.edu.au

NSW PARENTS COUNCIL
REPRESENTING PARENTS OF CHILDREN AT
NON-GOVERNMENT SCHOOLS SINCE 1962